



The news
you need to
know in
.5 minutes!

CAMILLA, GEORGIA
www.mitchellemc.com

Pelham High School Student Finishes 3rd at the State FFA Wiring Competition

Hunter Coker, Pelham High School Student and Gale Cutler, Senior Public Relations Coordinator at Georgia EMC

Hunter Coker, a student at Pelham High School, has proved himself to be one of the best in the state by placing third in the State EMC/FFA Agricultural Education Career Development Event (CDE) on January 12, 2019. The program is designed to teach career skills and helps students develop the ability to think critically, communicate clearly and perform effectively.

By offering students the chance to participate, the FFA and electric membership corporations (EMCs) in Georgia, including Mitchell EMC, provide an educational opportunity that, for nearly 50 years, has been teaching high school students the safe, efficient use of electricity.

Event participants complete a multiple choice written exam, a practical wiring problem testing their knowledge of the National Electric Code, and an oral presentation describing necessary steps to complete a specific electrical task.

According to Nathan Ireland, during the course of the competition, students have the opportunity to demonstrate the skills they previously learned in class and labs and take pride in their accomplishments. "High schools students from our community who get involved in the EMC/FFA Career Development Event get a lot out of it," said Ireland with Mitchell EMC. "Along with obtaining practical experience in the CDE, they have the chance to compete for scholarships." The scholarships earned in the competitions can be used at any college, university or vocational school in Georgia.

Any active FFA member enrolled in a 9th, 10th, 11th or 12th grade high school agriculture education class is eligible to participate. The top two individuals in each area contest go on to participate in a state competition.

"Throughout the state, we've seen the EMC/FFA electrical wiring contest bring out the best in students," said Ireland.

Mitchell EMC is a consumer-owned coopera-

tive providing electricity and related services to over 15,500 members in Baker, Calhoun, Colquitt, Decatur, Dougherty, Early, Grady, Lee, Miller, Mitchell, Thomas, Tift, Turner and Worth counties. Collectively, the 41 EMCs provide electricity and related services to 4.4 million people, nearly half of Georgia's population, across 73 percent of the state's land area.

Georgia FFA is the 3rd

largest state association with more than 42,000 members. There are currently 342 chapters and more than 475 agricultural education teachers in Georgia. An integral part of the agricultural education program in public schools, FFA's mission is to make a positive difference in the lives of students by developing their potential for leadership, personal growth and career success through agricultural education.

Founded in 1928, the former "Future Farmers of America" brought together students, teachers and agribusiness to solidify support for agricultural education. The name of the organization was changed to the National FFA Organization in 1988 to reflect the growing diversity of agriculture. Today, more than 650,000 student members are engaged in a wide range of agricultural education activities.



Hunter Coker, Pelham High School Student and Gale Cutler, Senior Public Relations Coordinator at Georgia EMC

Three Easy DIY Projects to Save Energy

By Anne Prince

Winter weather can have a big impact on your energy bills, hitting your pockets a little harder than you would have liked. Now that spring is just around the corner, it's the perfect time to tackle a few DIY efficiency projects for your home. The good news: You don't have to be an energy expert to do this!

There are several easy ways to save energy, but if you're willing to take a hands-on approach, here are three projects you can do now to start saving.

Make the Most of Your Water Heater.

Let's start with one of the easiest projects: insulating your water heater. Insulating a water heater that's warm to the touch can save 7 to 16 percent annually on your water heating bills. It should also be noted that if your water heater is new, it is likely already insulated. But if your water heater is warm to the touch, it needs additional insulation.

You can purchase a pre-cut jacket or blanket for about \$20. You'll also need two people for this project. Before you start, turn off the water heater. Wrap the blanket around the water heater and tape it to temporarily keep it in place. If necessary, use a marker to note the areas where the controls are so you can cut them out. Once the blanket is positioned correctly tape it permanently in place, then turn the water heater back on. If you have an electric water heater, do not set the thermostat above 130 degrees, which can cause overheating.

Seal Air Leaks with Caulk.

The average American family spends \$2,000 annually on energy bills, but unfortunately, much of that money is wasted through air leaks in the

home. Applying caulk around windows, doors, electrical wiring and plumbing can save energy and money. There are many different types of caulking compounds available, but the most popular choice is silicone. Silicone caulk is waterproof, flexible and won't shrink or crack.

Before applying new caulk, clean and remove any old caulk or paint with a putty knife, screwdriver, brush or solvent. The area should be dry before you apply the new caulk.

Apply the caulk in one continuous stream, and make sure it sticks to both sides of the crack or seam. Afterwards, use a putty knife to smooth out the caulk, then wipe the surface with a dry cloth.

Weather Strip Exterior Doors.

One of the best ways to seal air leaks is to weather strip exterior doors, which can keep out drafts and help you control energy costs. Weather stripping materials vary, but you can ask your local hardware or home store for assistance if you're unsure about the supplies you need.

When choosing weather stripping materials, make sure it can withstand temperature changes, friction and the general "wear and tear" for the location of the door. Keep in mind, you will need separate materials for the door sweep (at the bottom of the door) and the top and sides.

Before applying the new weather stripping, clean the moulding with water and soap, then let the area dry completely. Measure each side of the door, then cut the weather stripping to fit each section. Make sure the weather stripping fits snugly against both surfaces so it compresses when the door is closed.

By completing these simple efficiency projects, you can save energy (and money!) while increasing the comfort level of your home. And you can impress your family and friends with your savvy energy-saving skills.

Anne Prince writes on consumer and cooperative affairs for the National Rural Electric Cooperative Association, the national trade association representing more than 900 local electric cooperatives. From growing suburbs to remote farming communities, electric co-ops serve as engines of economic development for 42 million Americans across 56 percent of the nation's landscape.



Mitchell EMC Scholarship Opportunity Available

Mitchell EMC is currently accepting applications for our Operation Round Up Scholarship. Application forms and criteria can be found on our web site, www.mitchellemc.com.

Operation Round Up Scholarship:

- Funds for these scholarships are provided by consumer participation in the Operation Round Up program at Mitchell EMC.
- A maximum of fifteen (15) \$1,000 scholarships will be awarded to high school seniors and/or college/technical school students.
- Scholarships are awarded based on "All Around Student Performance" including academic performance, volunteerism, and participation in school, church and community activities. Financial need is also considered.
- The applicant, their parent(s) or legal guardian(s) must have their primary residence or place of business in the Mitchell EMC Service Area.
- Application deadline is March 1, 2019.

Applications will be judged by an independent scholarship committee, and winners will be notified by May 1. Applications are available at: The Community Foundation of South Georgia, P.O.Box 2654, Thomasville, Ga. 31799 or on our website at www.mitchellemc.com/community/scholarships. *Applications are due to The Community Foundation of South Georgia by March 1, 2019.*



Change Your CLOCKS, Change the BATTERIES in Your Smoke Alarm

Daylight Saving Time begins this year on Sunday March 10. For safety's sake, it's a good idea to change the batteries in your smoke alarms and carbon monoxide detectors when you change your clocks. According to the National Fire Protection Association (NFPA), seventy percent of all home fire fatalities occur in homes where there are no smoke alarms or no working smoke alarms.

March 10, 2019

Serving in 14 Southwest Georgia Counties...

Mitchell Electric Membership Corporation

82st Annual Meeting

April 19, 2019

Mitchell EMC Auditorium • 475 Cairo Road, Camilla, GA 31730

Registration 12:30 - 2:00 p.m.

Information Booths 12:30 - 2:00 p.m.

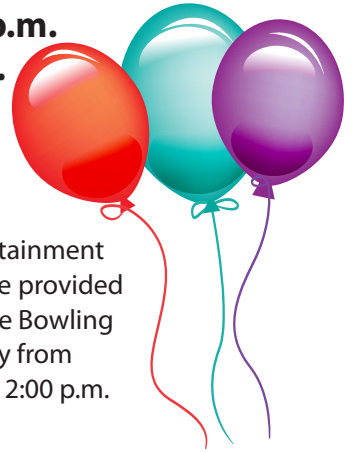
Entertainment 1:00 - 2:00 p.m.

Business Meeting 2:00 p.m.

**FREE GIFTS to the
first 500 consumers
to register**



Entertainment
will be provided
by The Bowling
Family from
1:00 - 2:00 p.m.



Energy Efficiency Tip of the Month

Spring is nearly here! Now is the perfect time to test your A/C and ensure it's ready for summer. Remember to check the evaporator coil, which should be cleaned annually for optimal efficiency.

Source: energy.gov



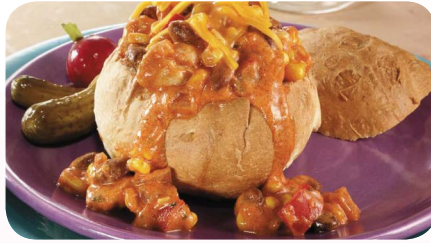
Note: If you move or no longer have electric service with Mitchell EMC, it is important that members keep their address current, so that future disbursements can be properly mailed. Capital credits are reserved for members even if they move out of the Mitchell EMC service area. Mitchell EMC will make a diligent effort to send a check by mail.

Statement of Equal Employment Opportunity

All applicants for employment shall be considered and hired on the basis of merit, without regard to race, color, religion, sex (including pregnancy), age, national origin, disability, genetic information, or past or present military status. The employment practices shall ensure equal treatment of all employees, without discrimination as to promotion, discharge, rates of pay, fringe benefits, job training, classification, referral, and other aspects of employment, on the basis of race, color, religion, sex (including pregnancy), national origin, disability, age, genetic information, or past or present military status. M/F/V/DV/D



WATT'S COOKING



Santa Fe Chicken Bread Bowls

Ingredients:

- 2 (11-oz.) cans Pillsbury™ refrigerated French bread
- 1 tablespoon olive or vegetable oil
- 2 boneless skinless chicken breast halves, cut into 1/2-inch pieces
- 1 red bell pepper, chopped
- 1/4 cup chopped red onion
- 1 (16-oz.) can chili beans, drained
- 1 (11-oz.) can Super Sweet Yellow and White Corn, drained
- 1 (10-oz.) can Old El Paso™ Red Enchilada Sauce
- 3/4 cup sour cream
- 1/2 cup ketchup
- 1 (1-oz.) pkg. Old El Paso™ Taco Seasoning Mix
- 1 tablespoon dried parsley flakes
- 1 teaspoon dried basil leaves
- 2 oz. (1/2 cup) shredded Cheddar cheese, if desired

Directions:

Heat oven to 350°F. Spray cookie sheet with nonstick cooking spray. Remove dough from cans. Cut each loaf into 3 pieces; shape each into ball, placing seam at bottom so dough is smooth on top. Place dough balls, seam side down, on sprayed cookie sheet. Bake at 350°F. for 22 to 26 minutes or until golden brown. Meanwhile, heat oil in large saucepan over medium-high heat until hot. Add chicken, bell pepper and onion; cook 5 to 7 minutes or until chicken is no longer pink in center, stirring occasionally. Add all remaining ingredients except cheese; mix well. Bring to a boil. Reduce heat to medium-low; simmer 7 minutes or until thoroughly heated, stirring occasionally. With sharp knife, cut small portion off top of each loaf. Lightly press center of bread down to form bowls. Place each bread bowl on individual serving plate. Spoon about 1 cup chicken mixture into each. Sprinkle evenly with cheese. Place top of each bread bowl next to filled bread bowl. Recipe can be found at www.pillsbury.com

Thanks!
to Vanessa Speigle,

Dougherty County, GA, for sharing this recipe.

Share & Win!

Send us your favorite quick and easy dinner recipes. If your recipe is chosen for print, you can win a

\$25 credit

on your next Mitchell EMC bill.

Send recipes to: Heather Greene, P.O. Box 409,
Camilla, GA 31730 or email to
heather.greene@mitchellemc.com.